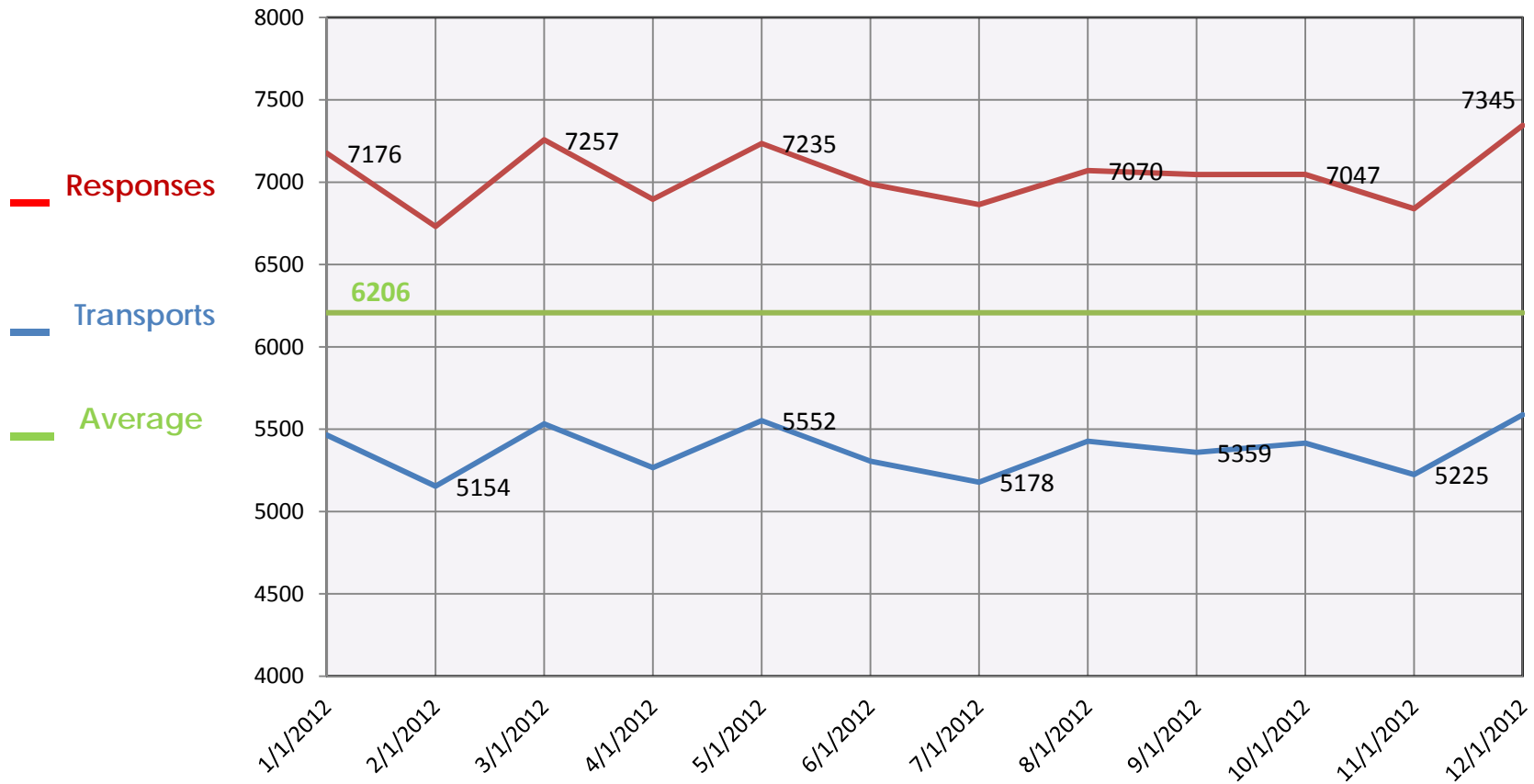


*Contra Costa EMS Agency  
Core Quality Indicators  
2012 Annual Report*

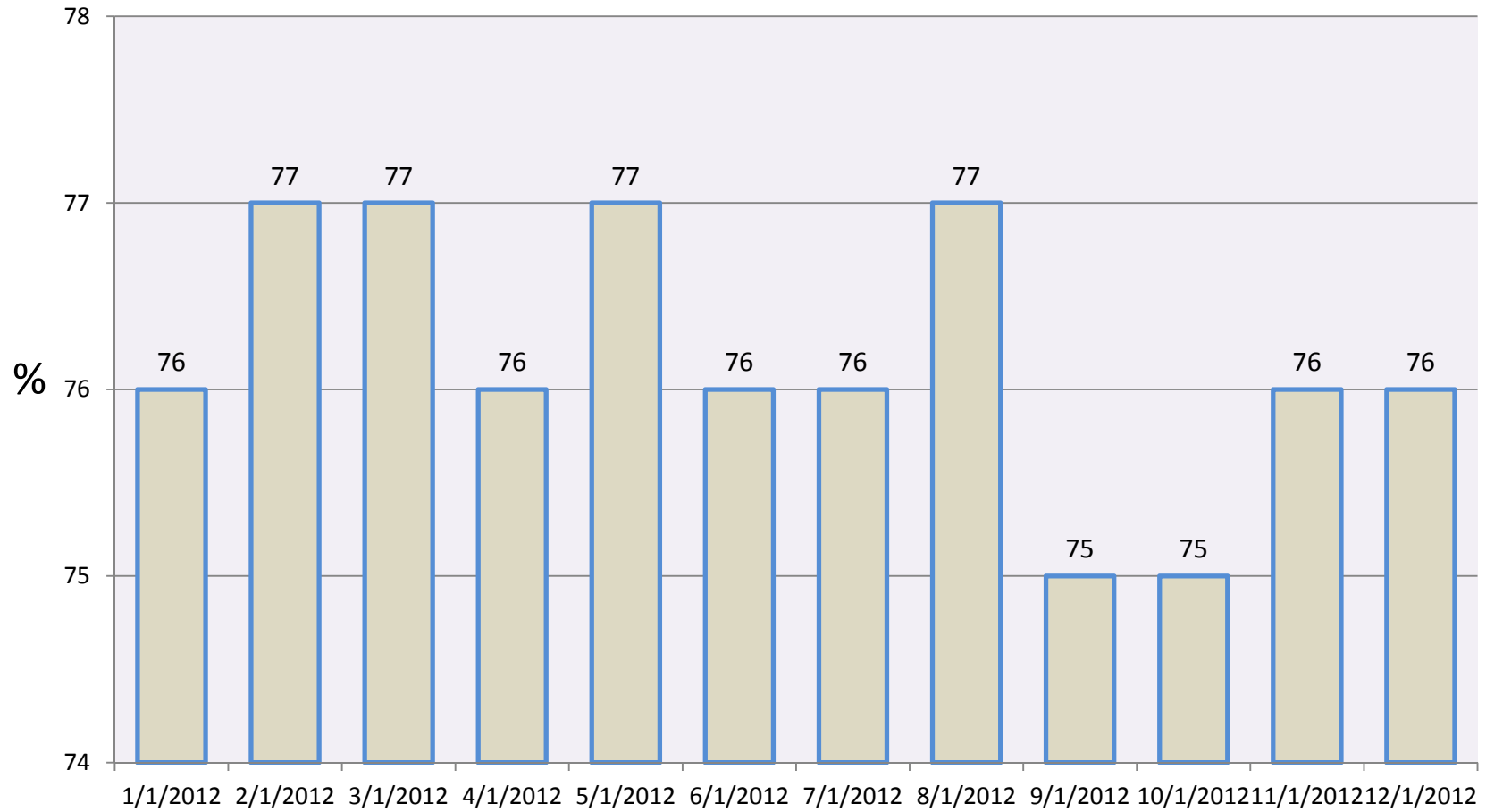
*System Utilization  
2012 Annual Report*

# Transports vs. Responses Contra Costa County 2012 All Ambulances



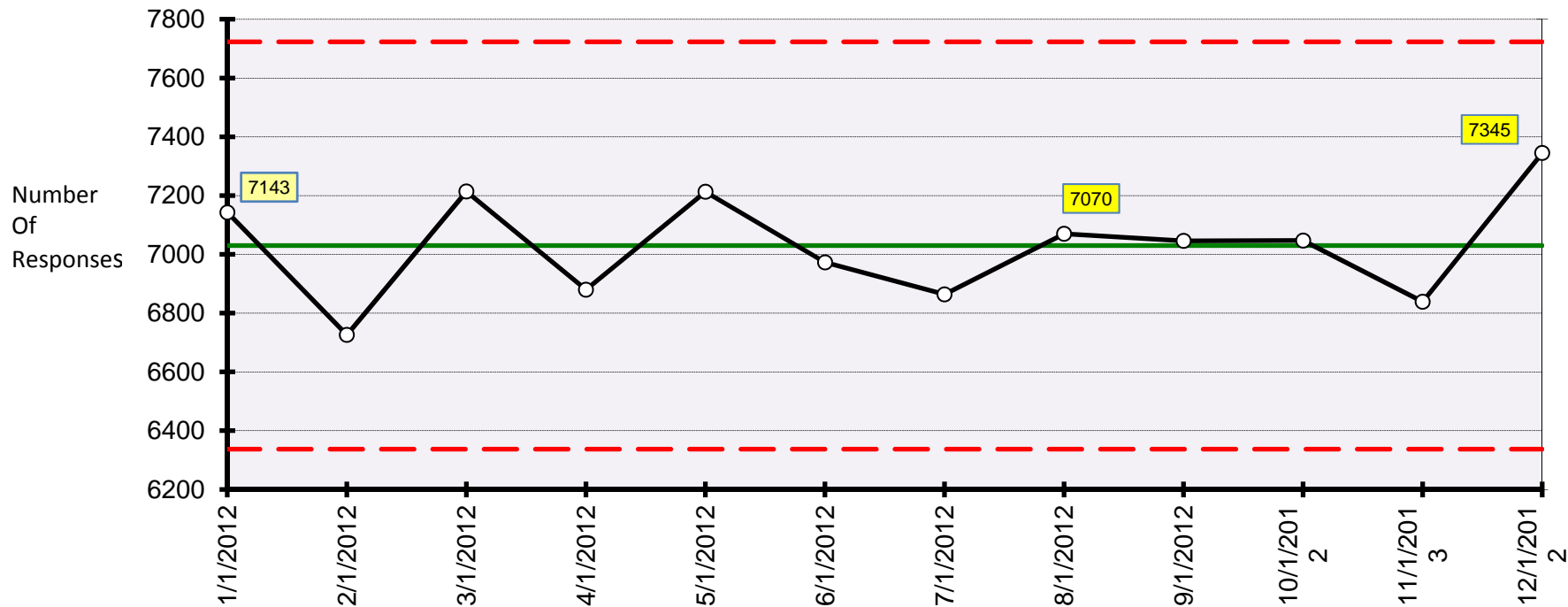
# % Transports Per 911 Responses 2012

n=64133/84495



## Ambulance Responses by Month - 2012

N=84495



**No Special Cause Detected**

**Avg of Data Shown** 7030  
**Median Data Shown** 7046.5  
**Sigma for Limits** 231.0  
**Base for Limits** Average MR

**Chart Type:** Chart for Individuals

Centerline: 7,030 Process Limits: Lower: 6,337 Upper: 7,723

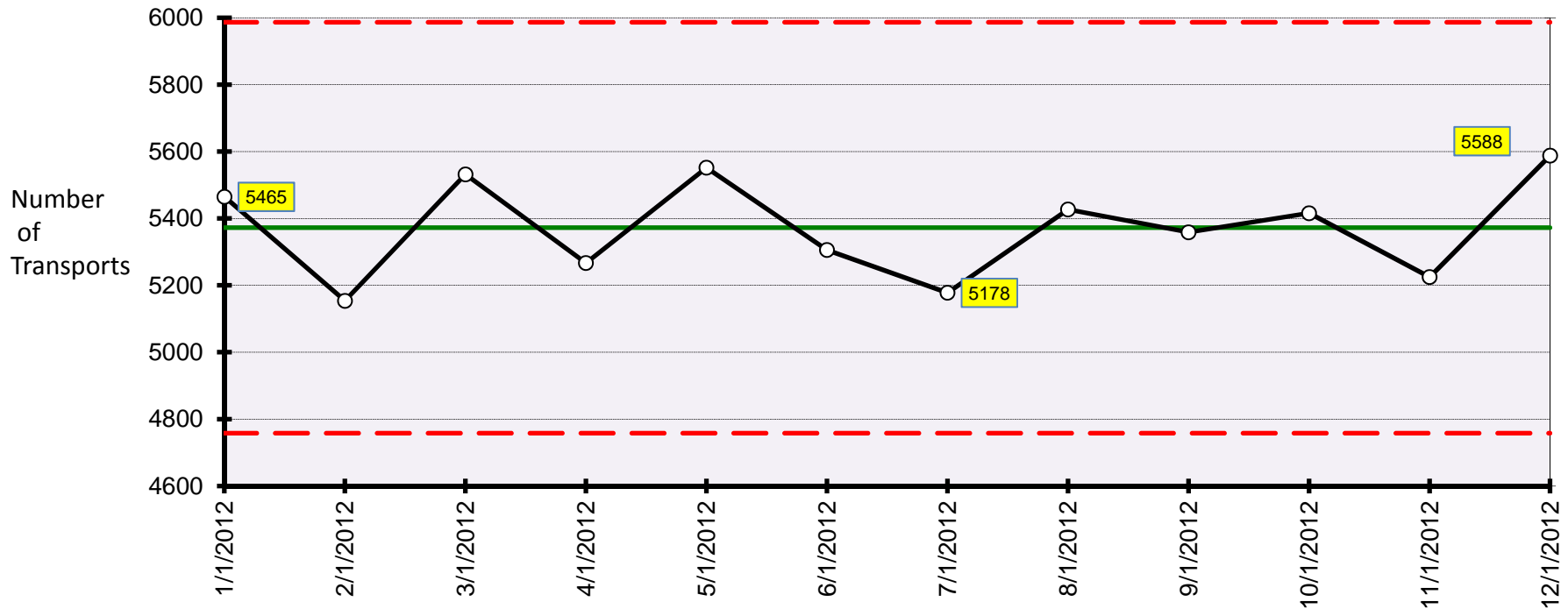
Database Column

1

- A: 1 Beyond Control Limit
- B: 9 On One Side of Average
- C: 6 Trending Up or Down
- D: 14 Alternating Up & Down
- E: 2 of 3 Beyond 2 Sigma
- F: 4 of 5 Beyond 1 Sigma
- G: 15 Within 1 Sigma
- H: 8 Outside 1 Sigma

## Ambulance Transports by Month - 2012

N= 64133



**No Special Cause Detected**

**Avg of Data Shown** 5372.417  
**Median Data Shown** 5387.5  
**Sigma for Limits** 204.8  
**Base for Limits** Average MR

**Chart Type:** Chart for Individuals

Centerline: 5,372 Process Limits: Lower: 4,758 Upper: 5,987

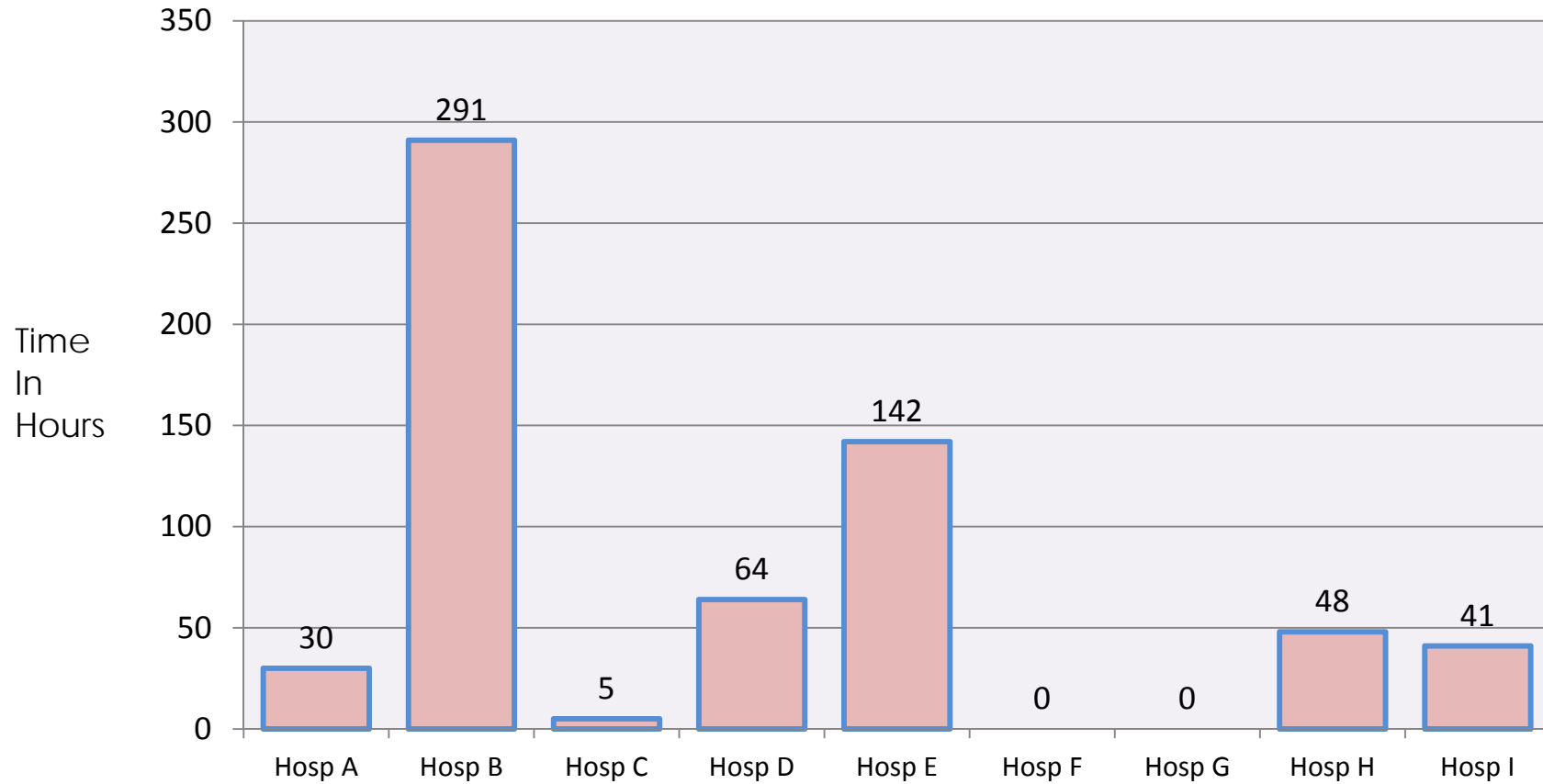
- A. 1 Beyond Control Limit
- B. 9 On One Side of Average
- C. 6 Trending Up or Down
- D. 14 Alternating Up & Down

Database Column

1

- E. 2 of 3 Beyond 2 Sigma
- F. 4 of 5 Beyond 1 Sigma
- G. 15 Within 1 Sigma
- H. 8 Outside 1 Sigma
- X. Excluded or Missing Data

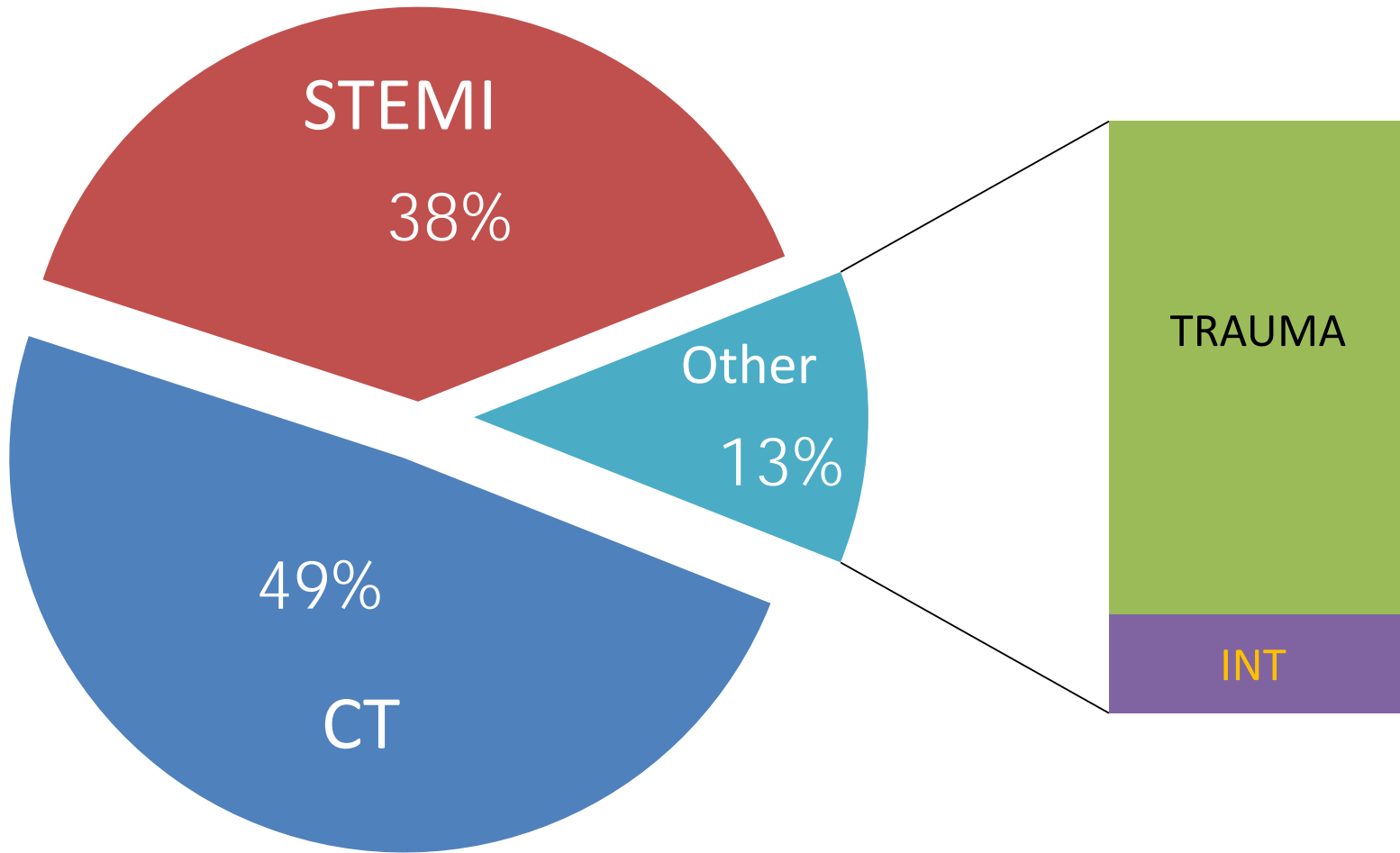
# Total Annual Hours on Diversion by Facility 2012



Contra Costa County Hospitals

# Cause of Hospital Diversion by %

2012 N=626 hrs

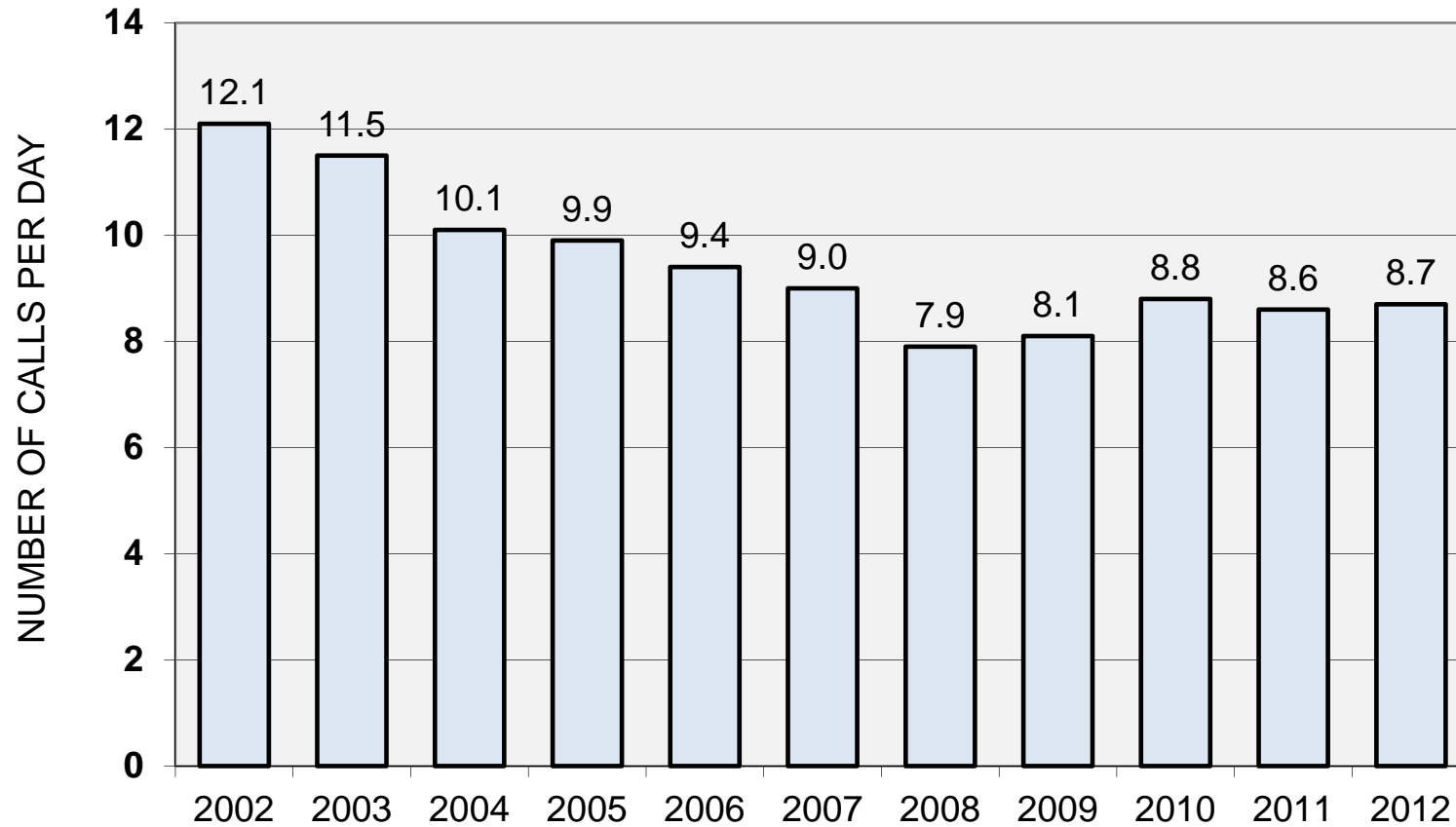




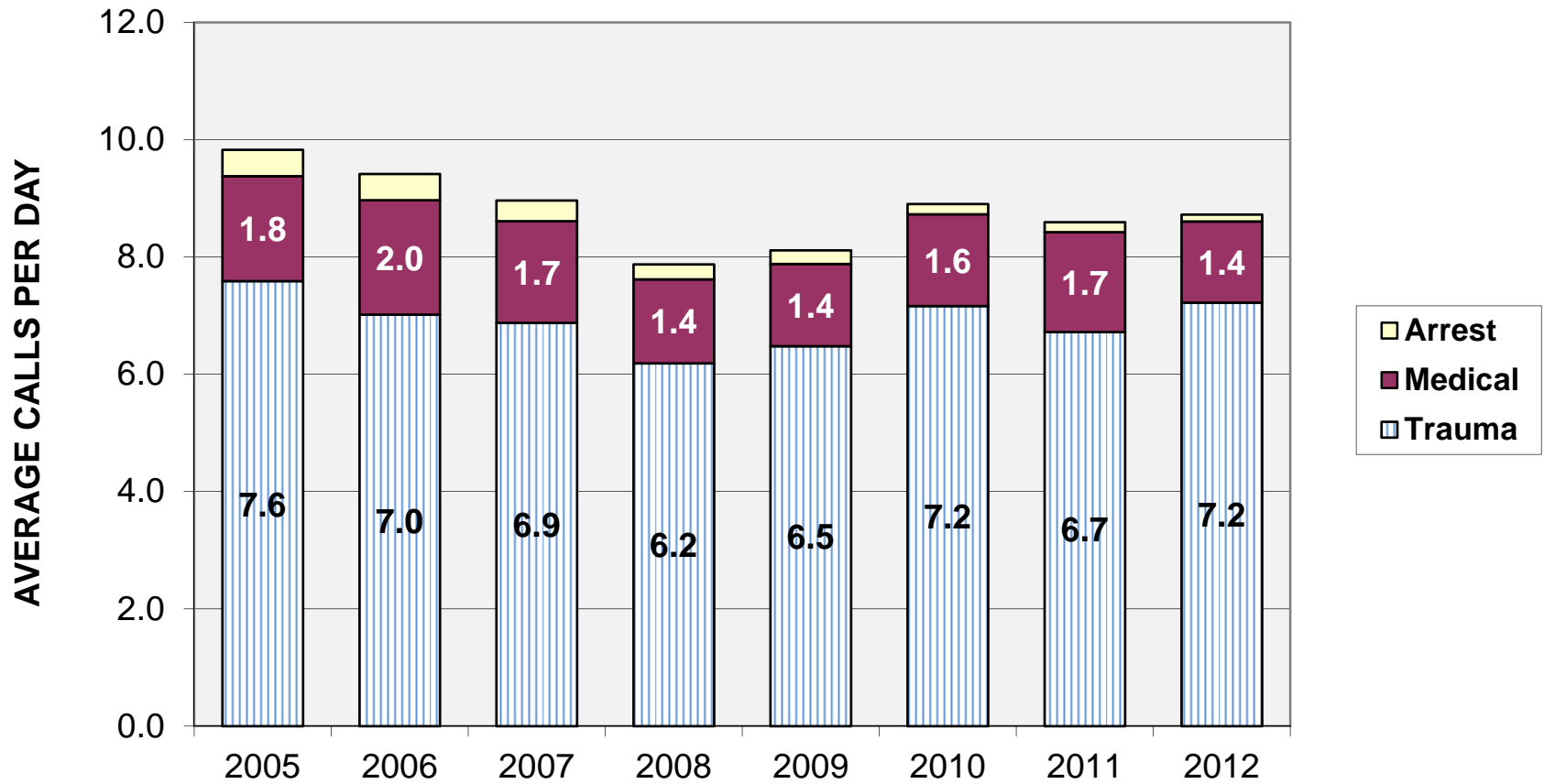
# *Base Hospital 2012 Report*

Data Source: Base Hospital Registry; to June 2012.

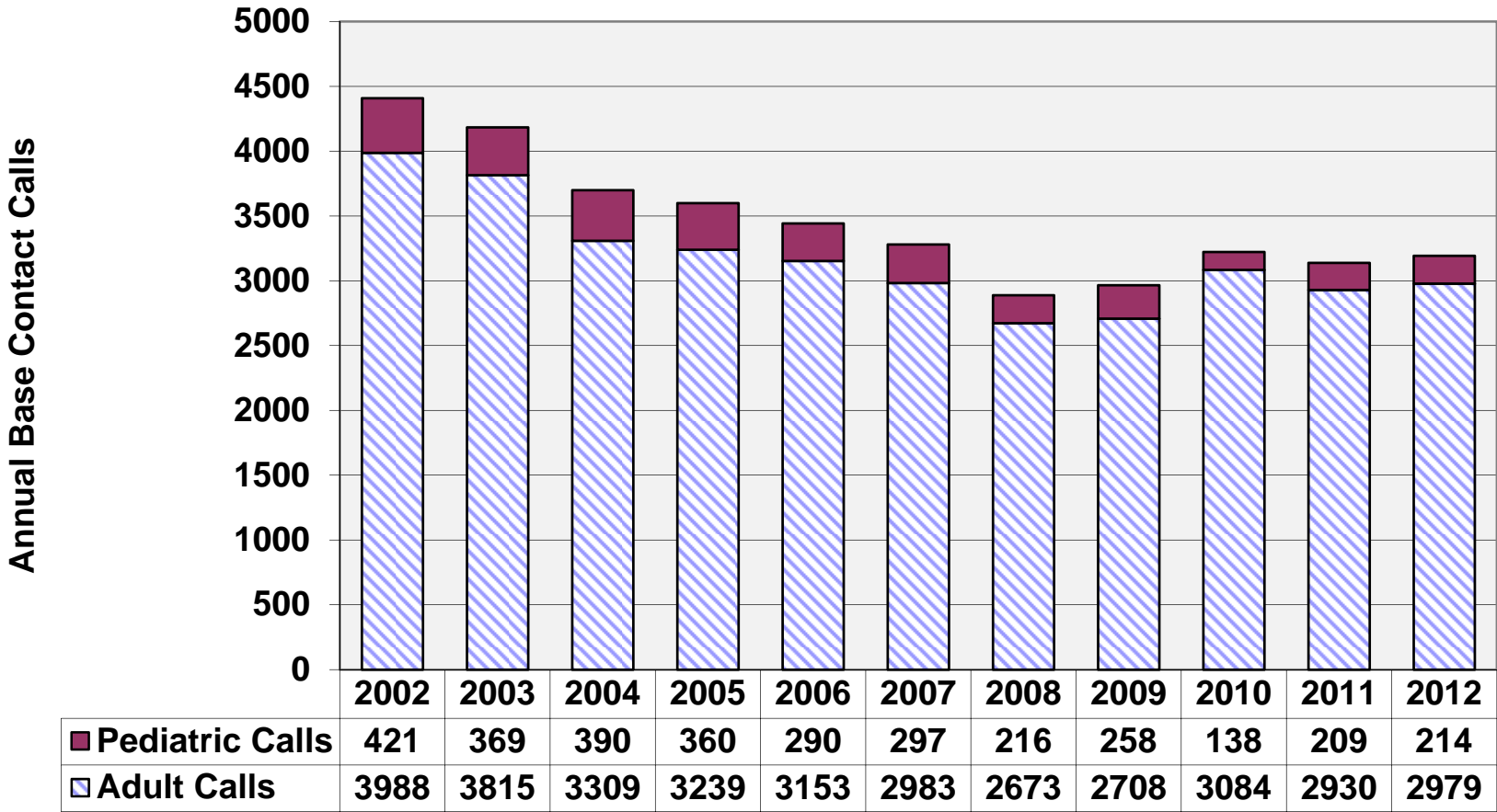
# AVERAGE DAILY BASE CALLS 2002-2012



# DAILY BASE CALL BY CALL TYPE

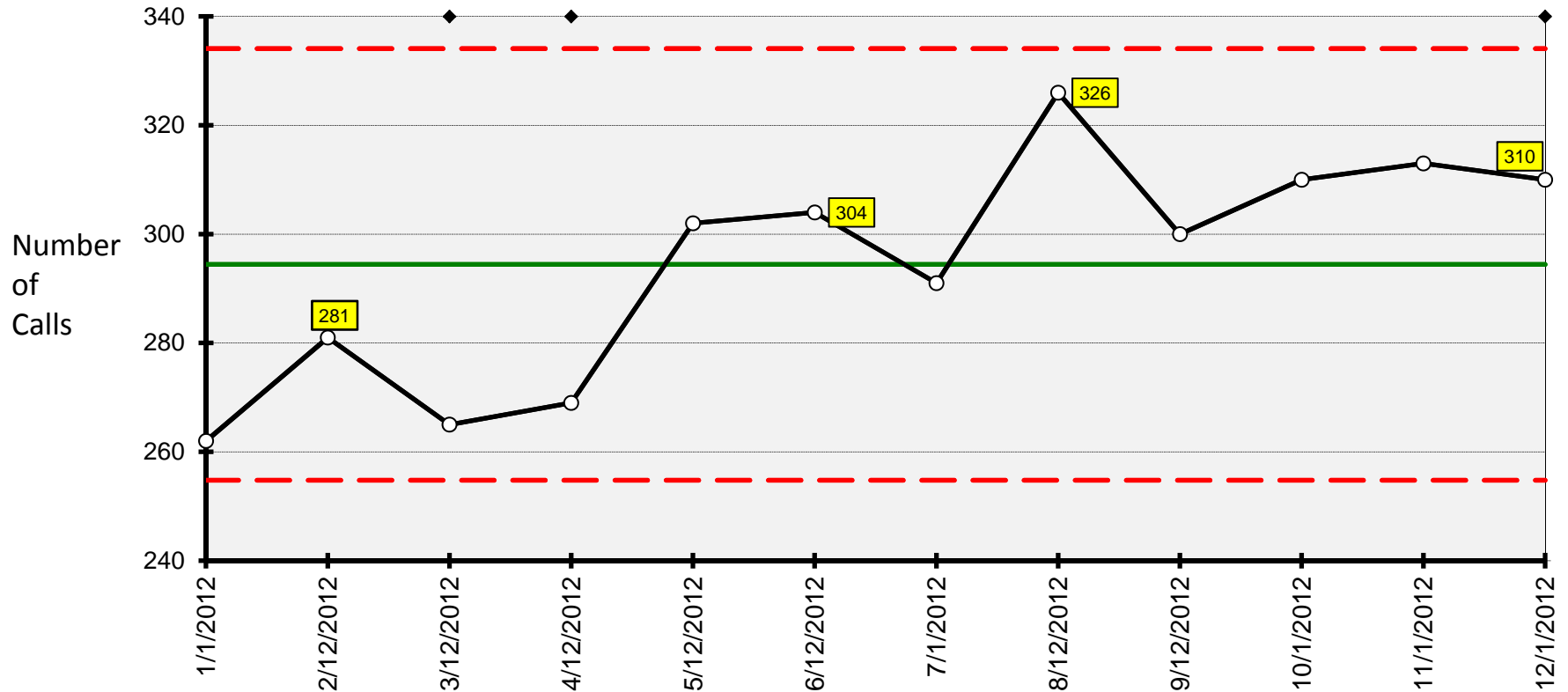


## Base Contact for Adult vs. Pediatric Patients



Note: Pediatric age 14 or below

## Base Hospital Call Volume by Month 2012



### Special Cause Detected

**Avg of Data Shown** 294.4167  
**Median Data Shown** 301  
**Sigma for Limits** 13.22  
**Base for Limits** Average MR

### Chart Type: Chart for Individuals

Centerline: 294.4 Process Limits: Lower: 254.8 Upper: 334.1

**A:** 1 Beyond Control Limit  
**B:** 9 On One Side of Average  
**C:** 6 Trending Up or Down  
**D:** 14 Alternating Up & Down

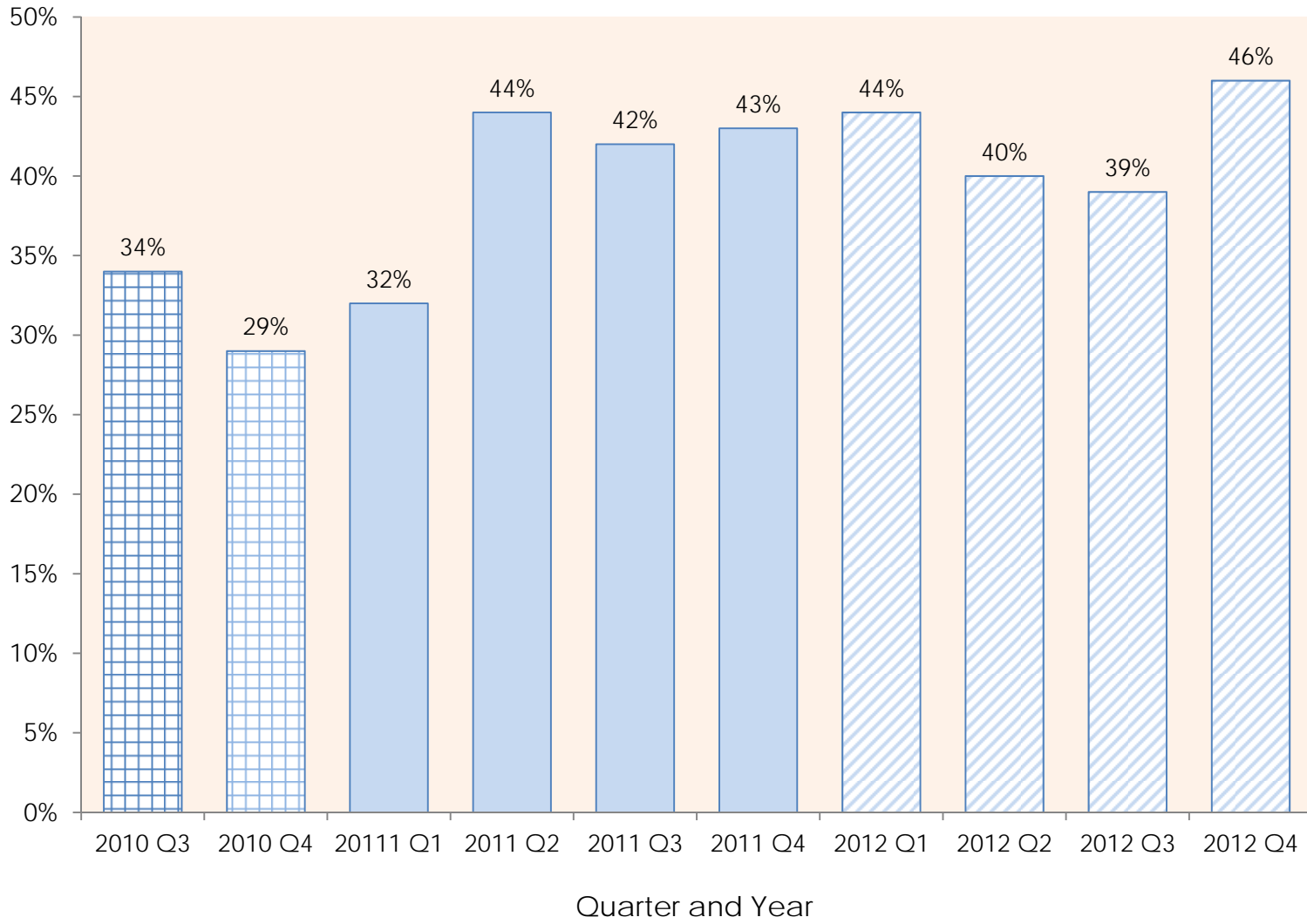
**E:** 2 of 3 Beyond 2 Sigma  
**F:** 4 of 5 Beyond 1 Sigma  
**G:** 15 Within 1 Sigma  
**H:** 8 Outside 1 Sigma  
**X:** Excluded or Missing Data

Database Column 1

# *Cardiac Arrest 2012 Report*

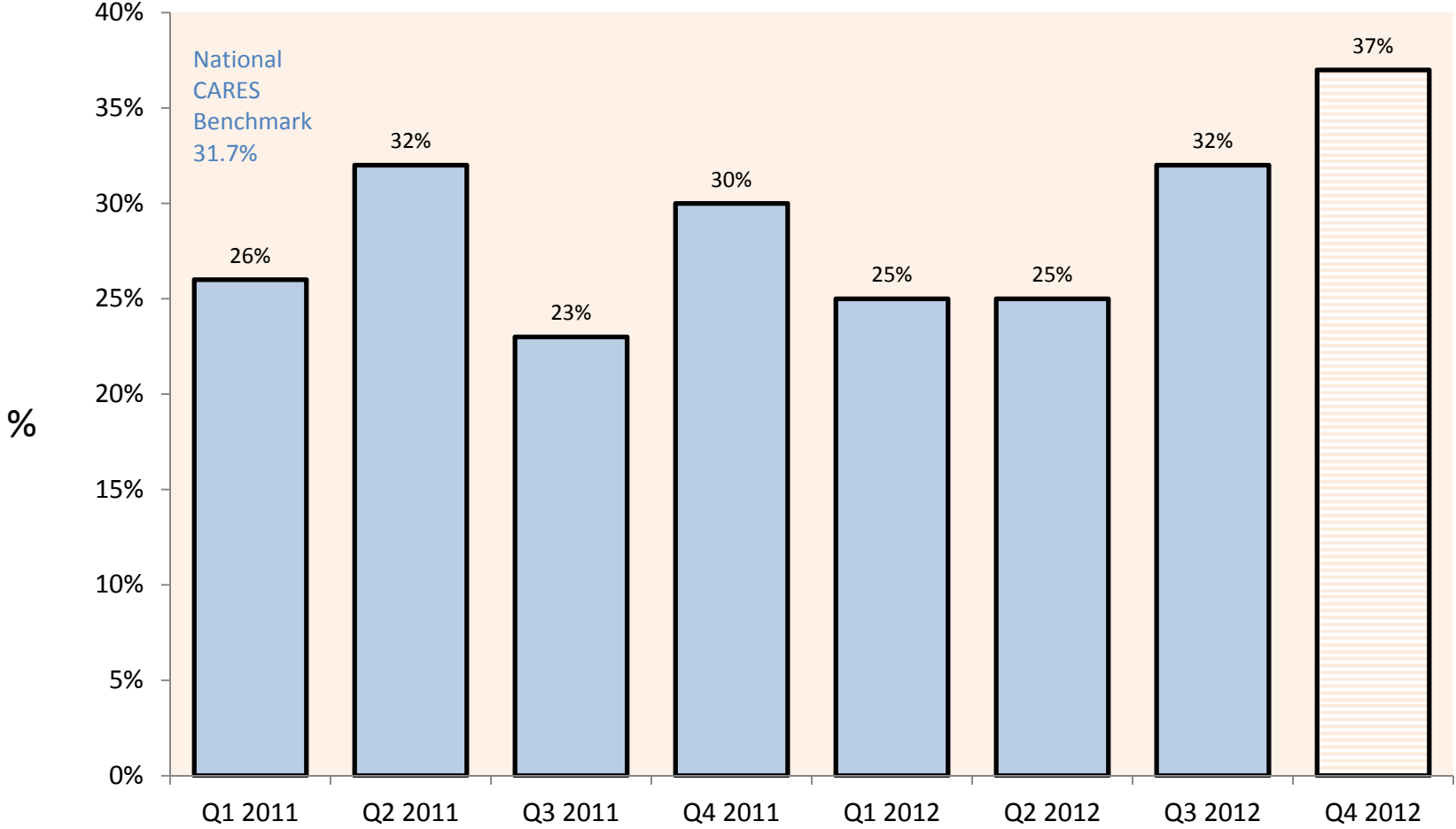
Data Source: CARES Registry through June 2012.  
Excludes Medical Facilities (hospitals, clinics, SNF); Excludes arrest after EMS arrival

## % Bystander CPR By Quarter 2010 - 2012



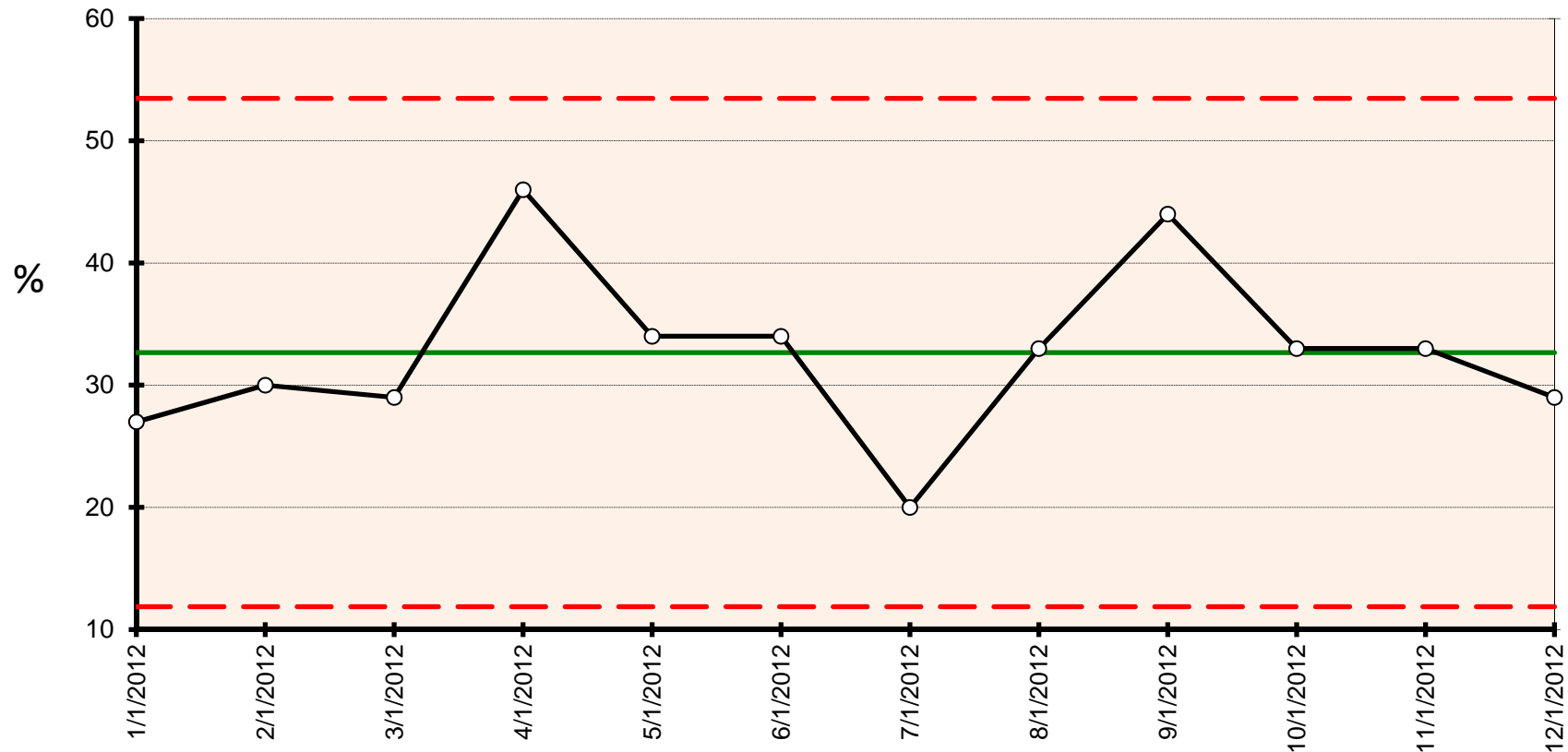
# Cardiac Arrest Survival - Utstein

## 201-12 N=509





## % Cardiac Arrest Survival – Utstein By Month 2012



**No Special Cause Detected**

**Avg of Data Shown** 32.66667  
**Median Data Shown** 33  
**Sigma for Limits** 6.931  
**Base for Limits** Average MR

**Chart Type:** Chart for Individuals

Centerline: 32.67 Process Limits: Lower: 11.87 Upper: 53.46

A: 1 Beyond Control Limit  
 B: 9 On One Side of Average  
 C: 6 Trending Up or Down  
 D: 14 Alternating Up & Down

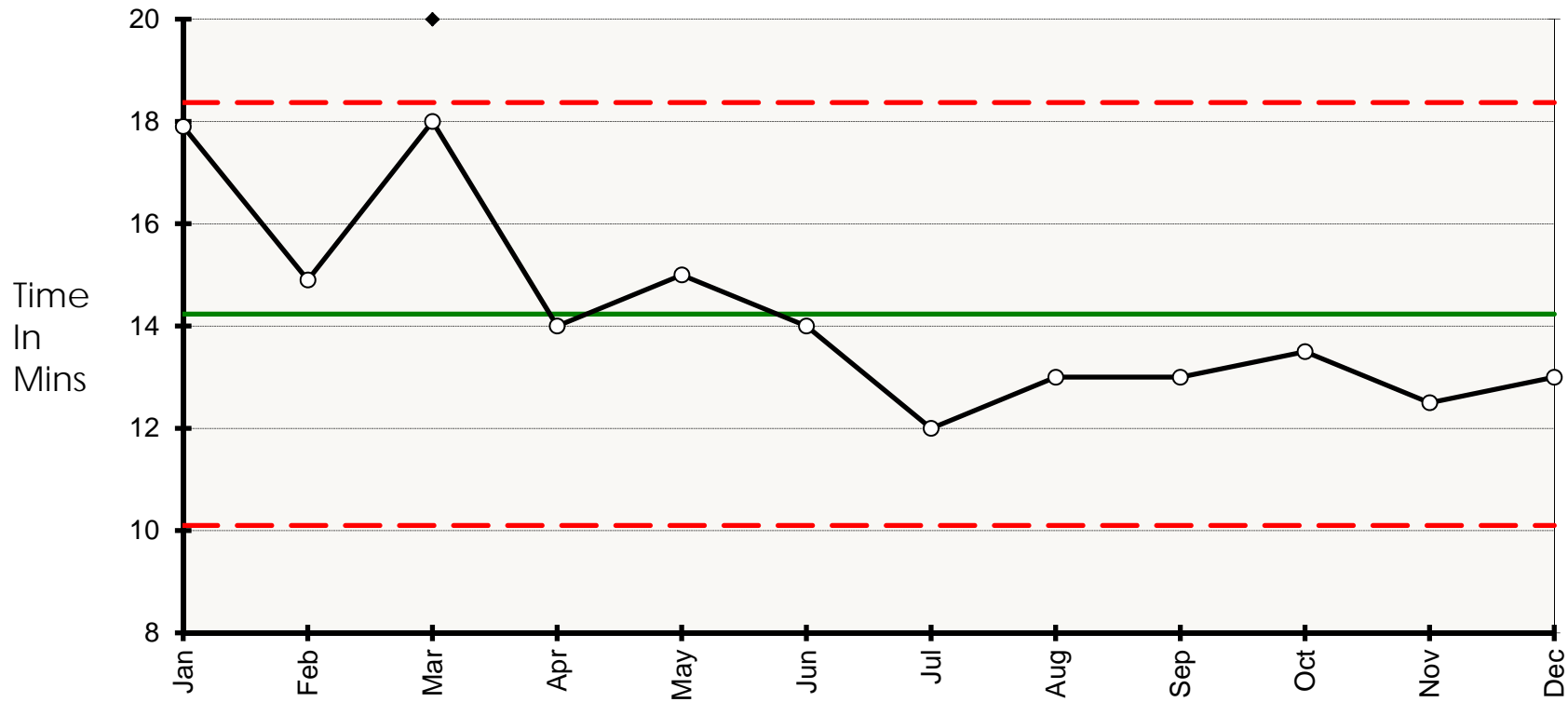
Database Column

1

E: 2 of 3 Beyond 2 Sigma  
 F: 4 of 5 Beyond 1 Sigma  
 G: 15 Within 1 Sigma  
 H: 8 Outside 1 Sigma  
 X: Excluded or Missing Data

*STEMI System  
2012 Report*

## Median Prehospital Scene Time Interval - STEMI 2012



### Special Cause Detected

**Avg of Data Shown** 14.23333  
**Median Data Shown** 13.75  
**Sigma for Limits** 1.378  
**Base for Limits** Average MR

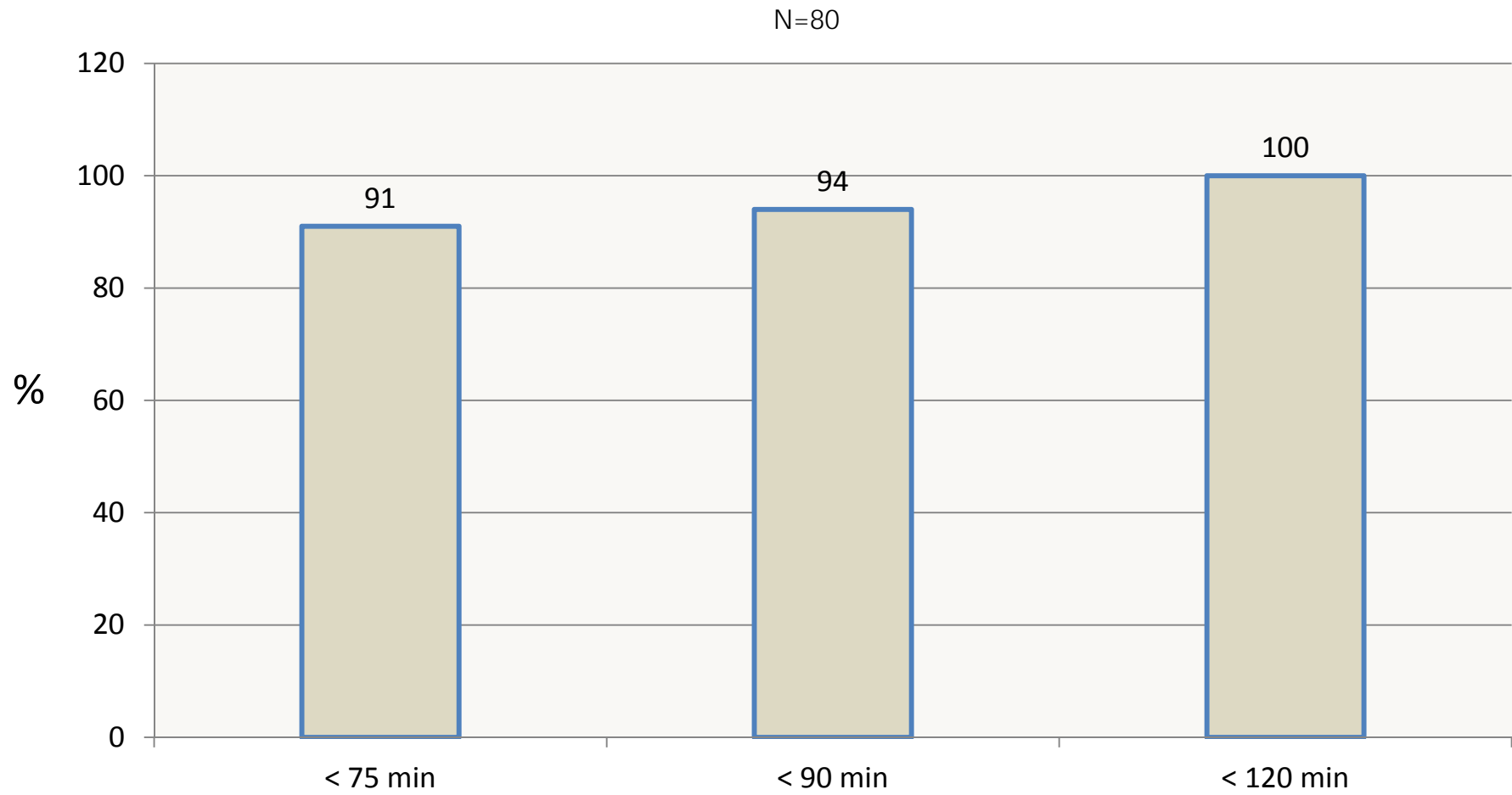
### Chart Type: Chart for Individuals

Centerline: 14.23 Process Limits: Lower: 10.10 Upper: 18.37

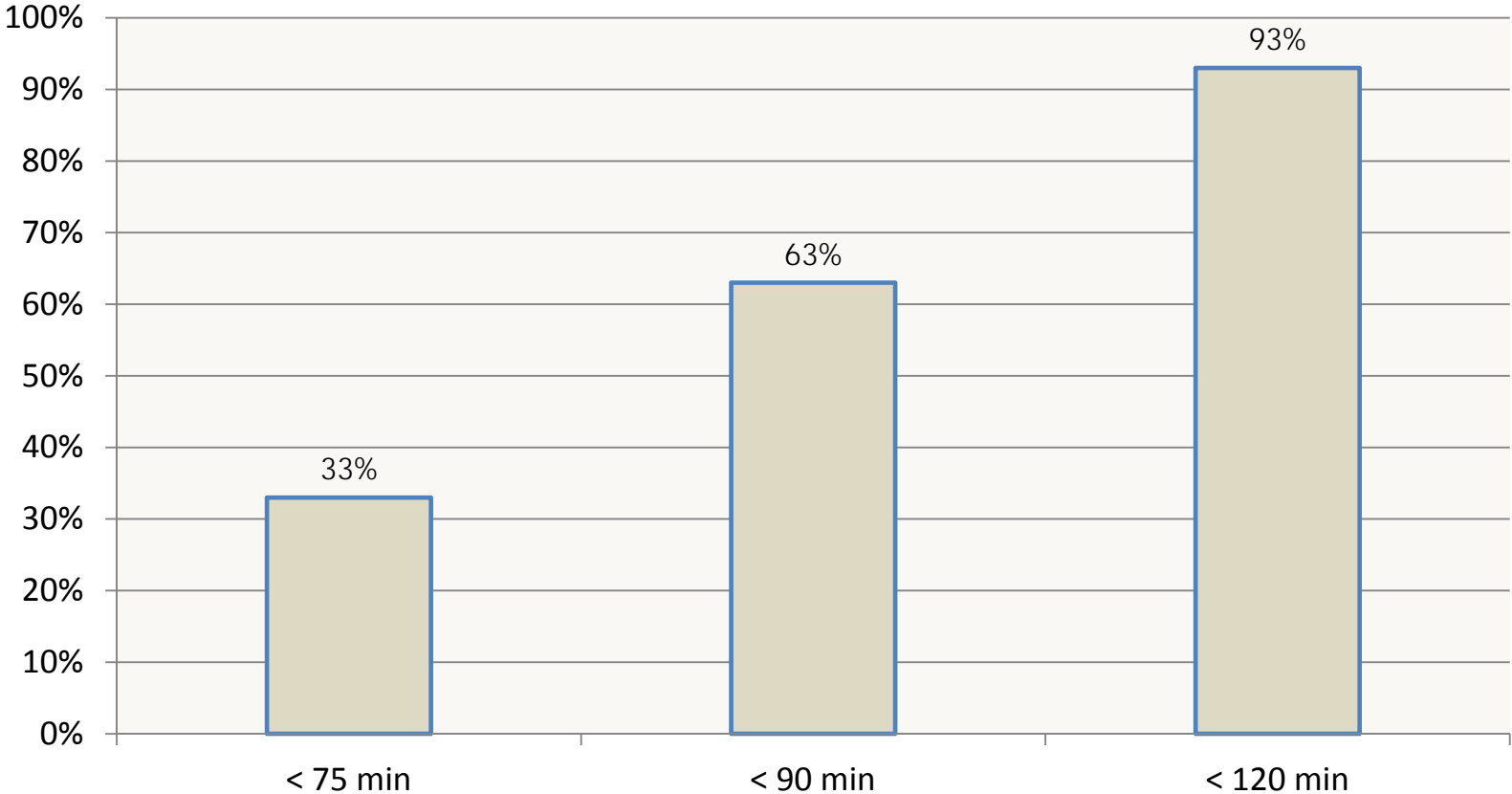
**A:** 1 Beyond Control Limit  
**B:** 9 On One Side of Average  
**C:** 6 Trending Up or Down  
**D:** 14 Alternating Up & Down  
**E:** 2 of 3 Beyond 2 Sigma  
**F:** 4 of 5 Beyond 1 Sigma  
**G:** 15 Within 1 Sigma  
**H:** 8 Outside 1 Sigma  
**X:** Excluded or Missing Data

Database Column 1

# 2012 STEMI D2I



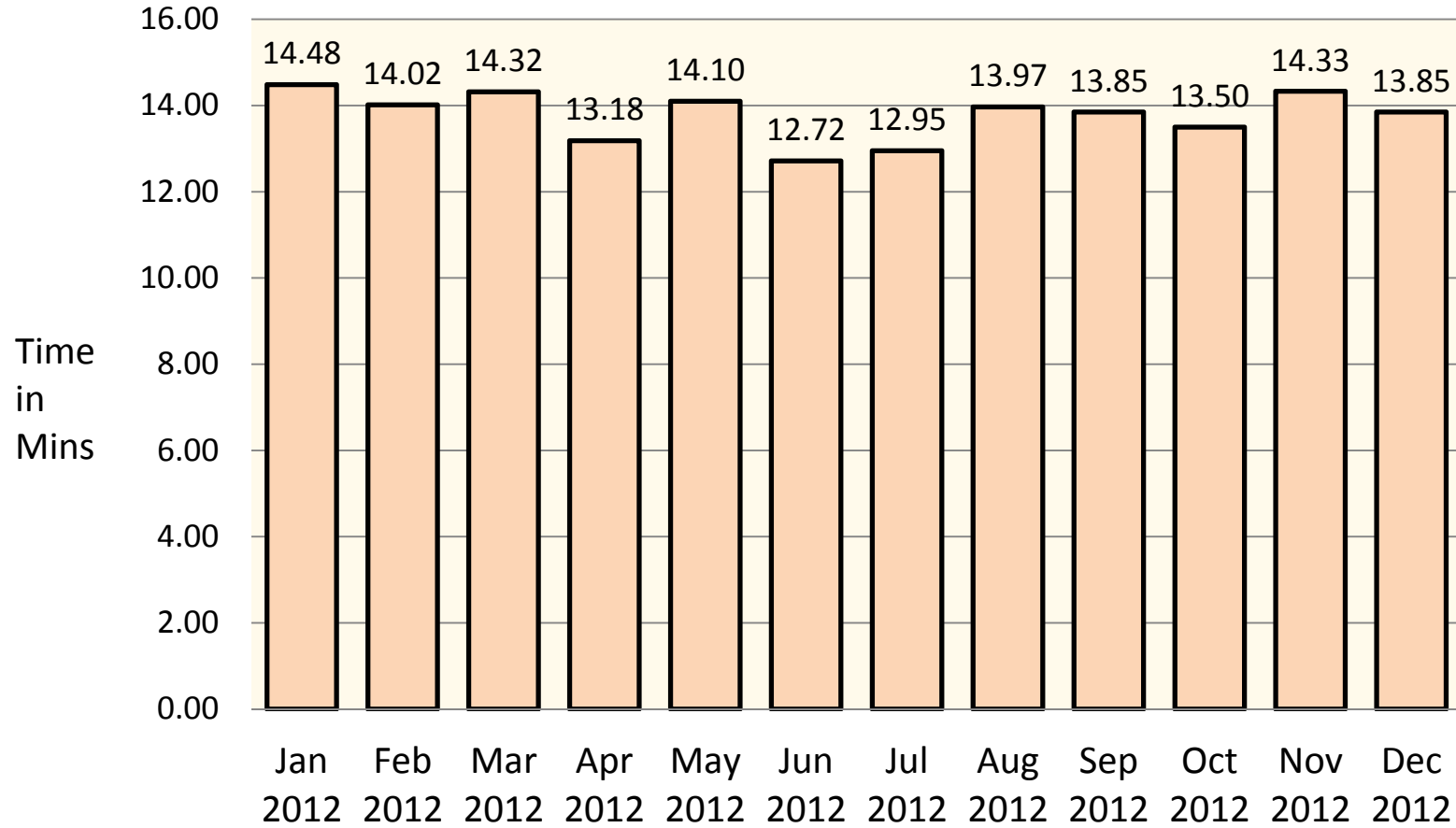
Contra Costa County STEMI System  
911 to First PCI Time  
n=80; 2012



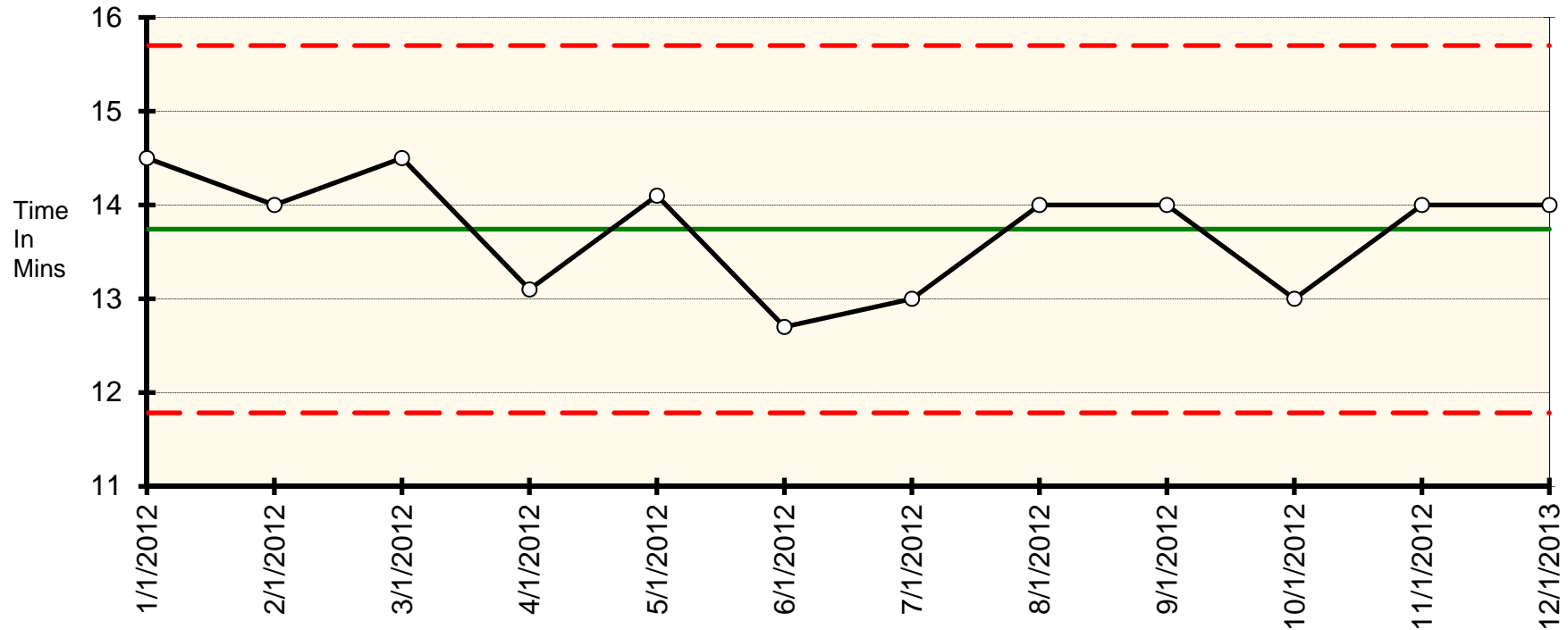
# *Stroke System 2012 Report*

Data Source: MEDS 3 California Stroke Registry

Contra Costa County EMS  
Stroke Scene Time Interval 2012



# Prehospital Scene Time Intervals by Month Contra Costa Stroke System 2012



**No Special Cause Detected**

**Chart Type: Chart for Individuals**

Database Column

Centerline: 13.74    Process Limits: Lower: 11.78    Upper: 15.70

1

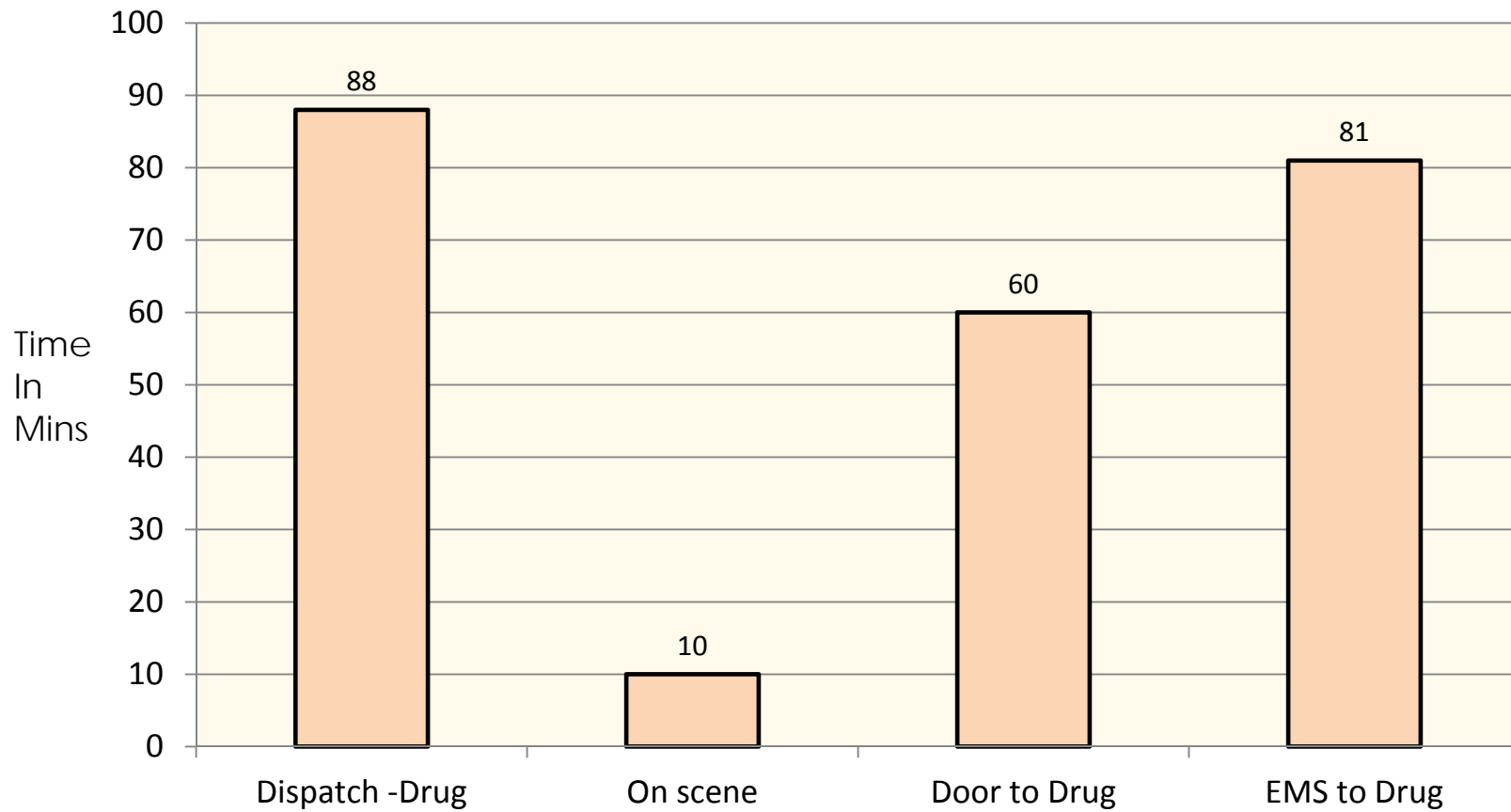
**Avg of Data Shown** 13.74167  
**Median Data Shown** 14  
**Sigma for Limits** 0.6528  
**Base for Limits** Average MR

A: 1 Beyond Control Limit  
 B: 9 On One Side of Average  
 C: 6 Trending Up or Down  
 D: 14 Alternating Up & Down

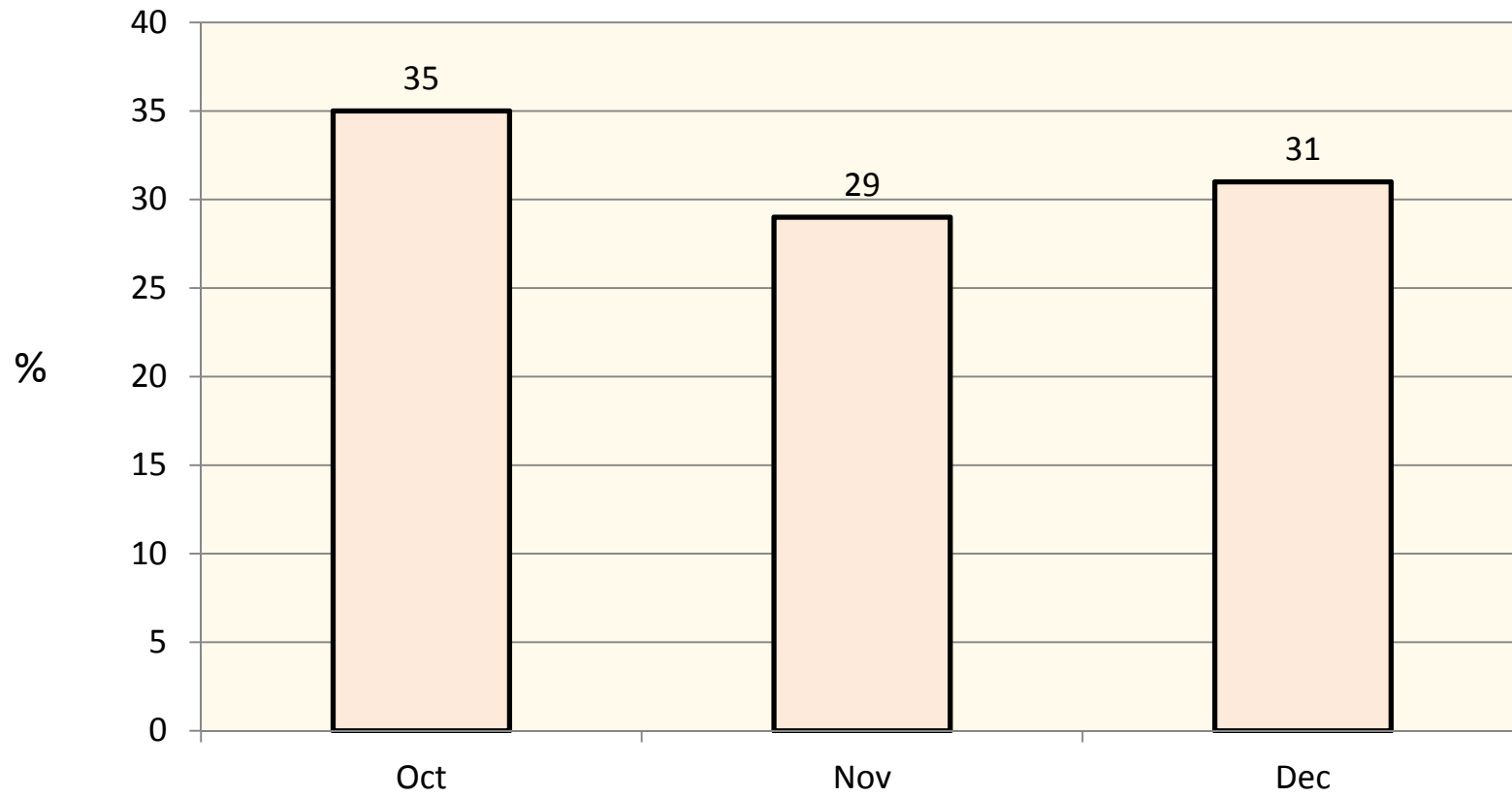
E: 2 of 3 Beyond 2 Sigma  
 F: 4 of 5 Beyond 1 Sigma  
 G: 15 Within 1 Sigma  
 H: 8 Outside 1 Sigma  
 X: Excluded or Missing Data



Median Stroke Time Intervals  
TPA Cases  
Q4 2012 n=20



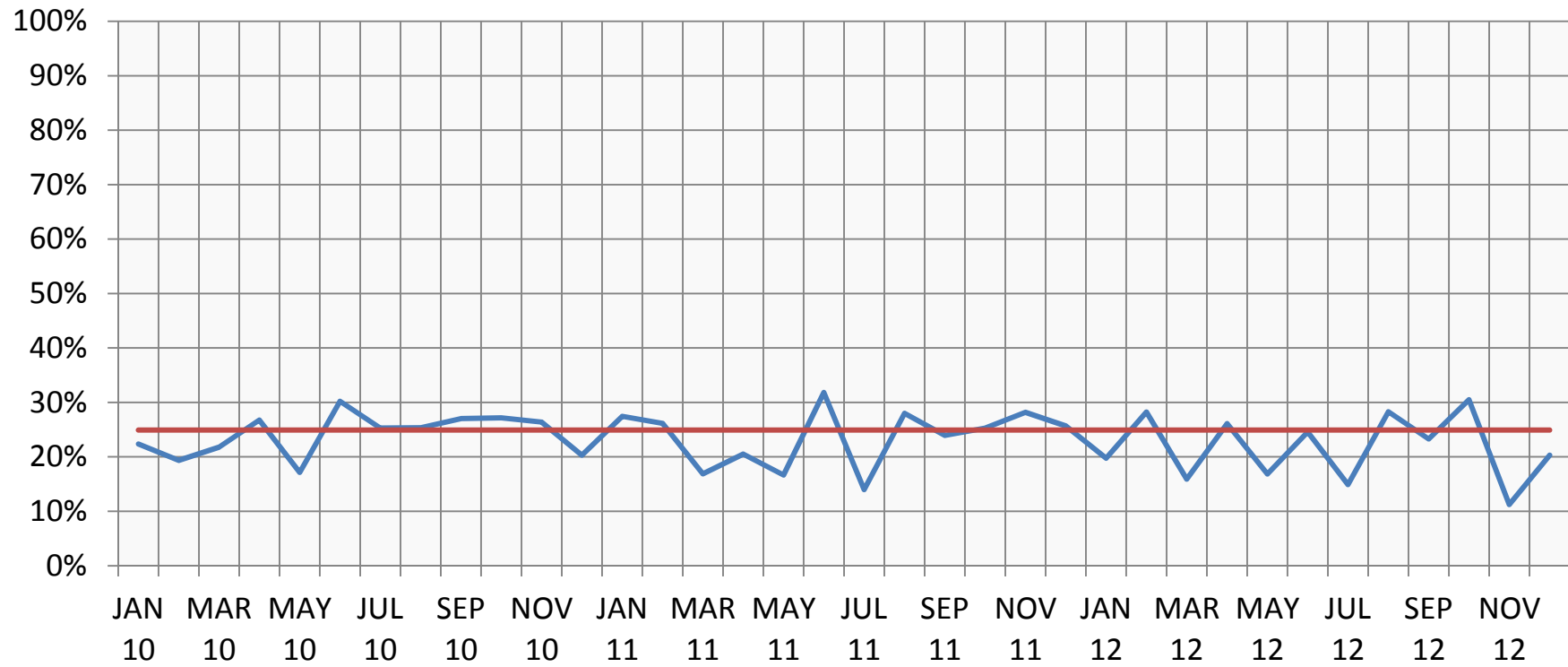
# % Stroke Overtriage Q3 2012



*Trauma System  
2012 Report*

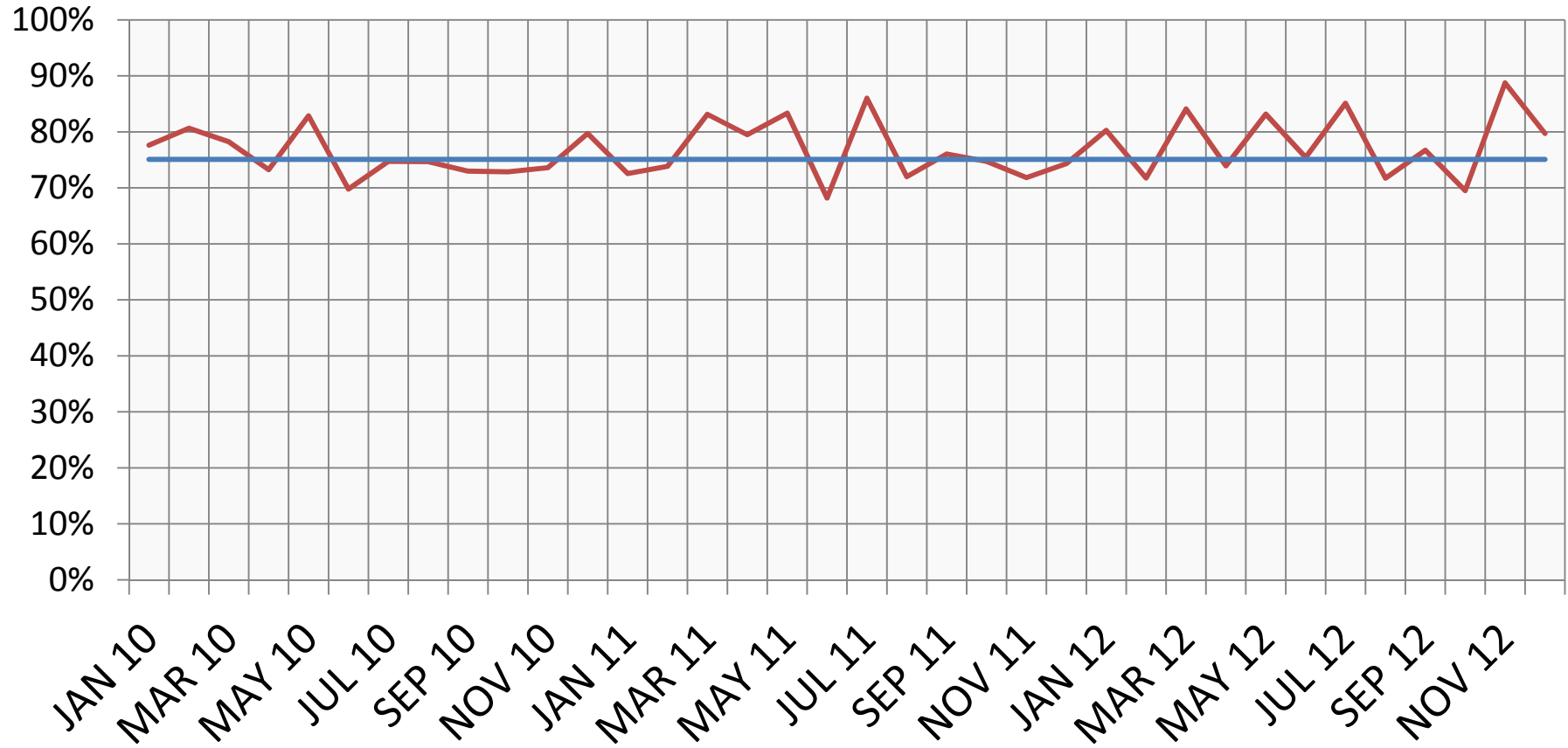
# Contra Costa Trauma Activations

## % ISS > 15

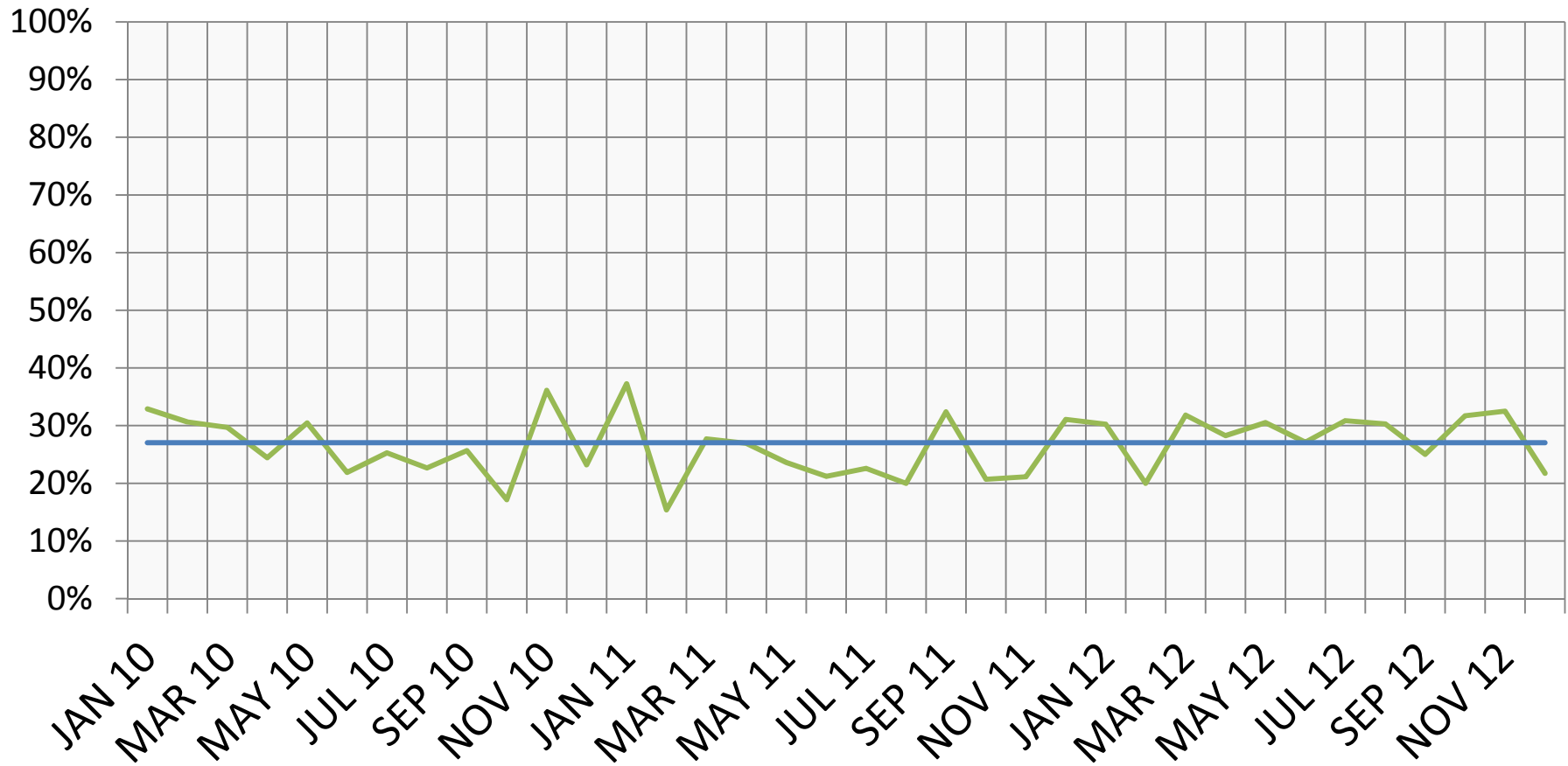


# Contra Costa Trauma Activations

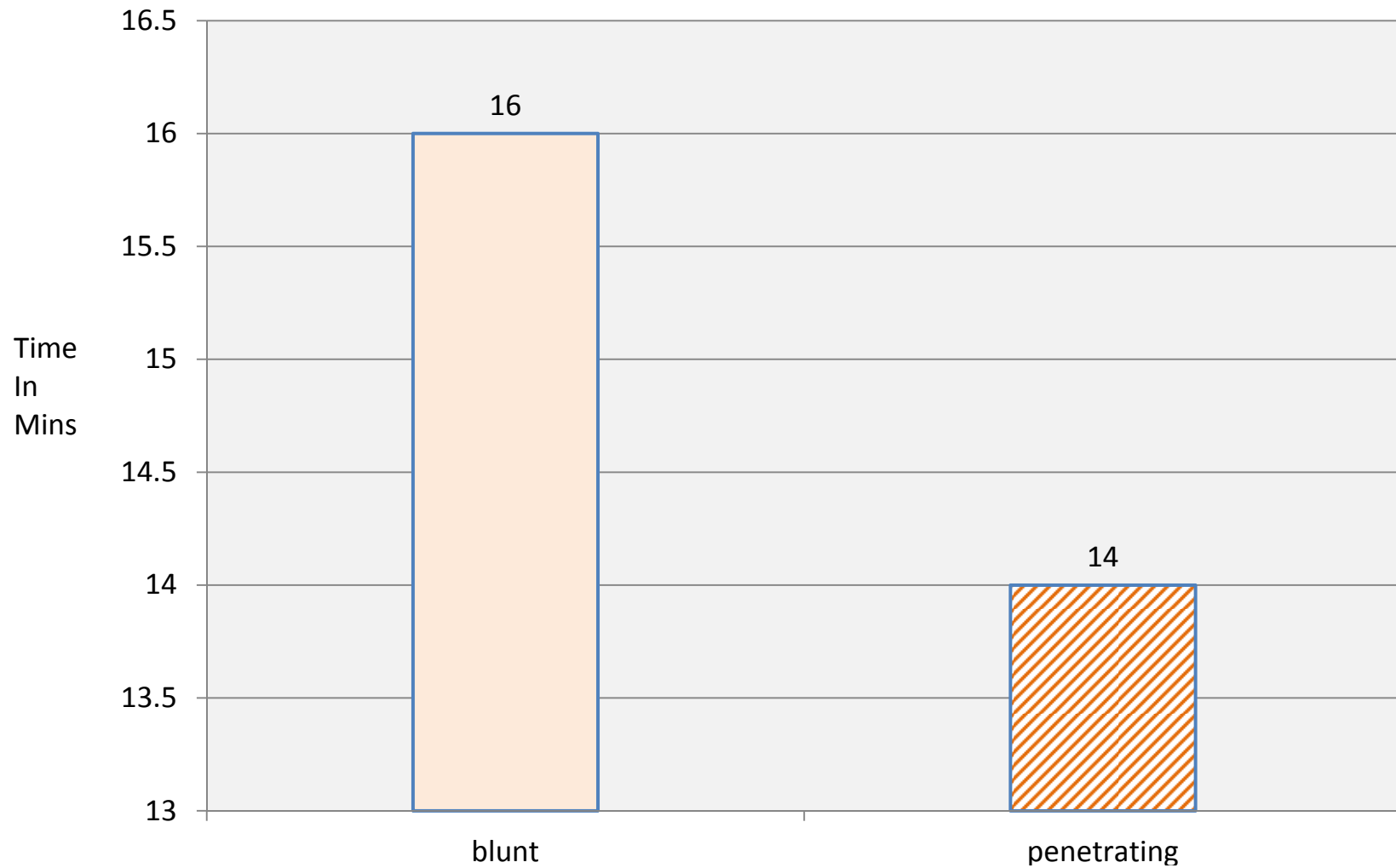
% ISS < 15



# Contra Costa Trauma Activations % Discharged Home



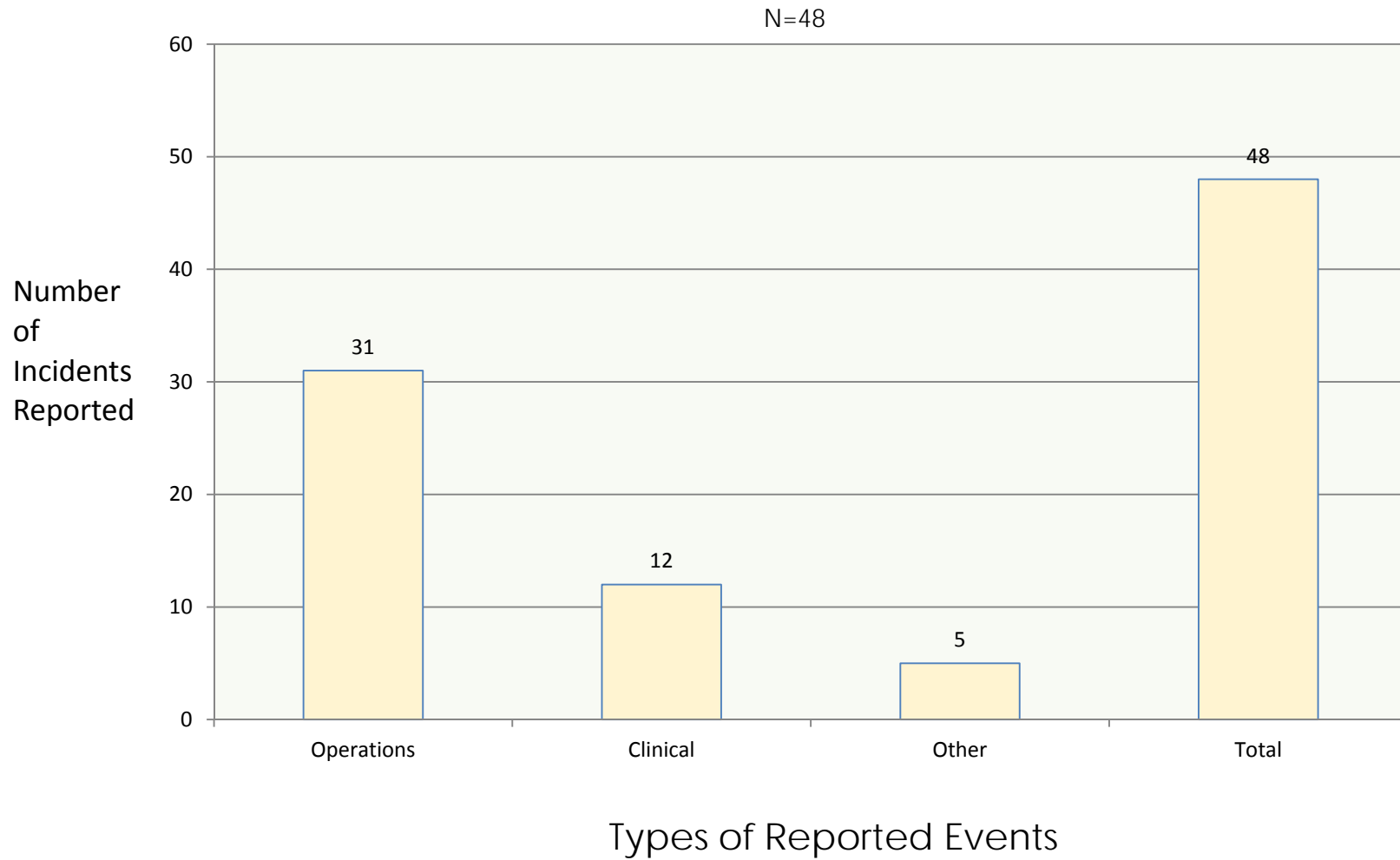
# Median On Scene Time Interval Blunt vs. Penetrating Trauma 2012



# *Patient Safety*

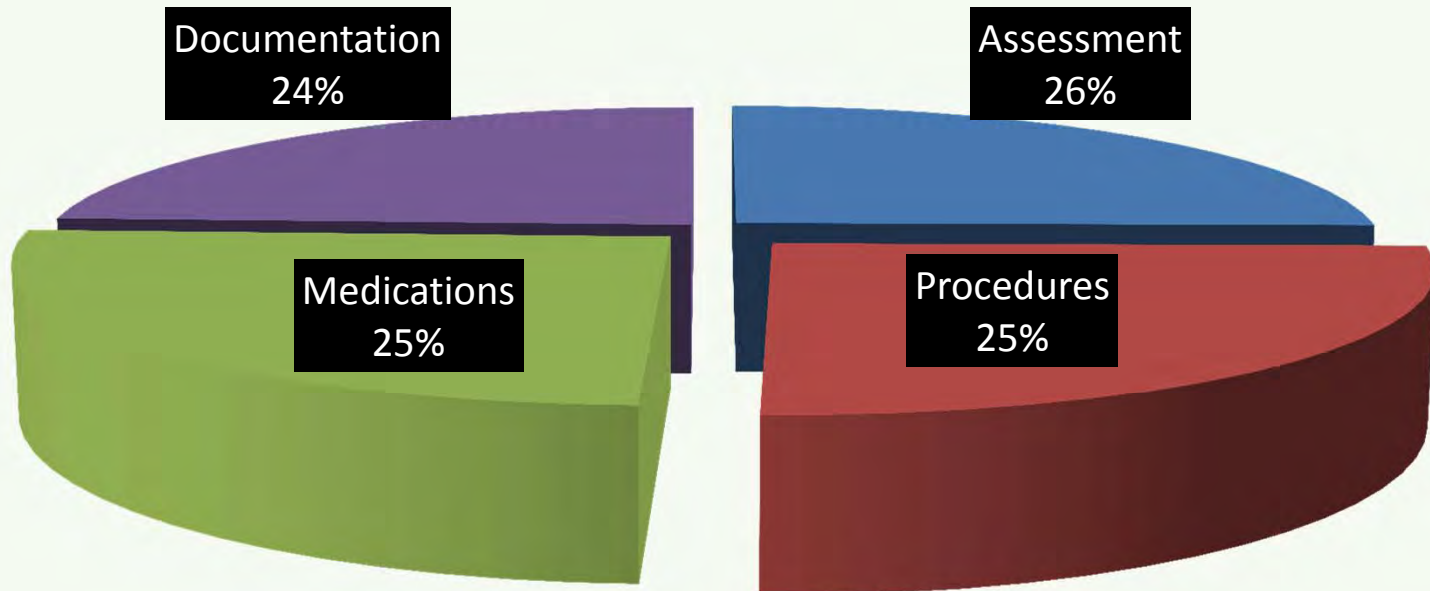


# Patient Safety Events Type of Event by Frequency 2012

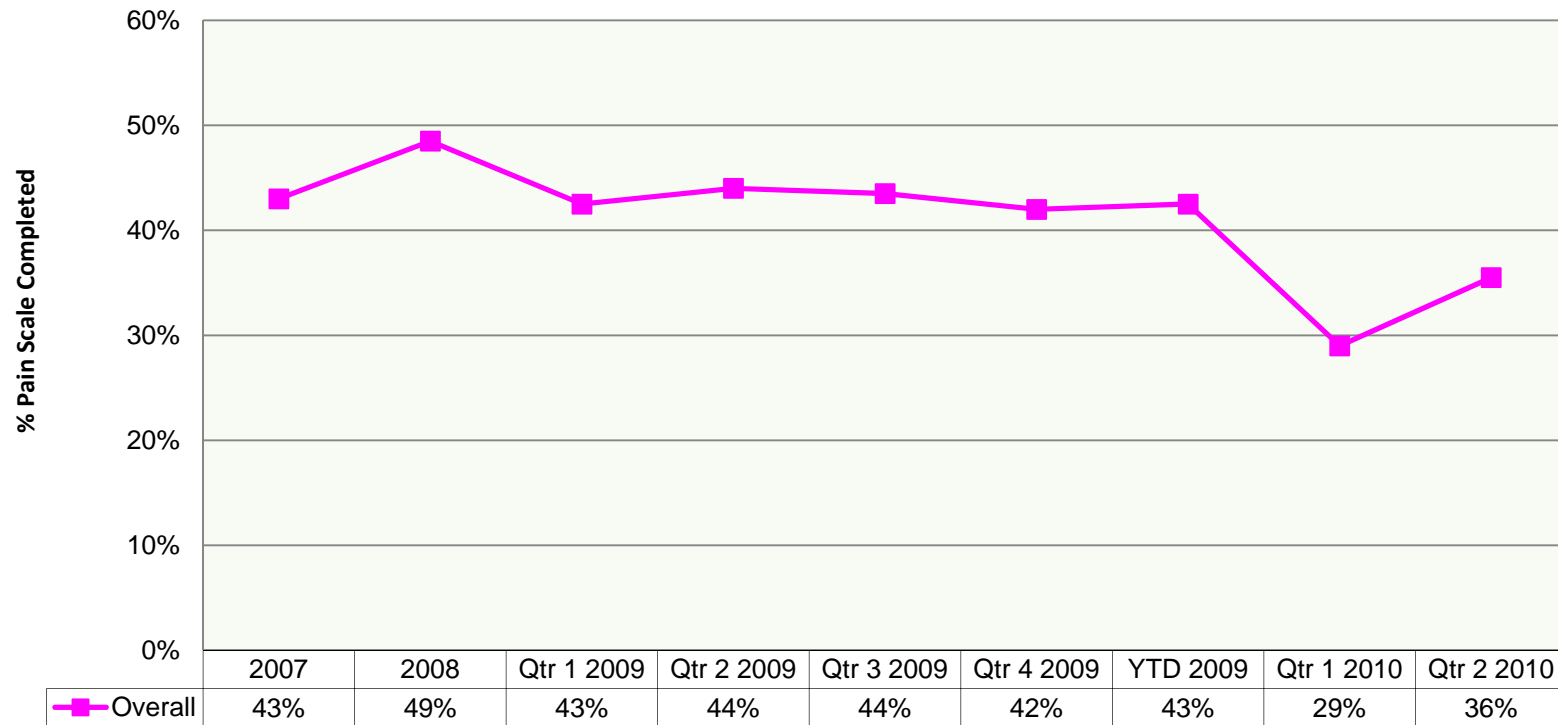


# Patient Safety Events by Clinical Type 2012

N=12

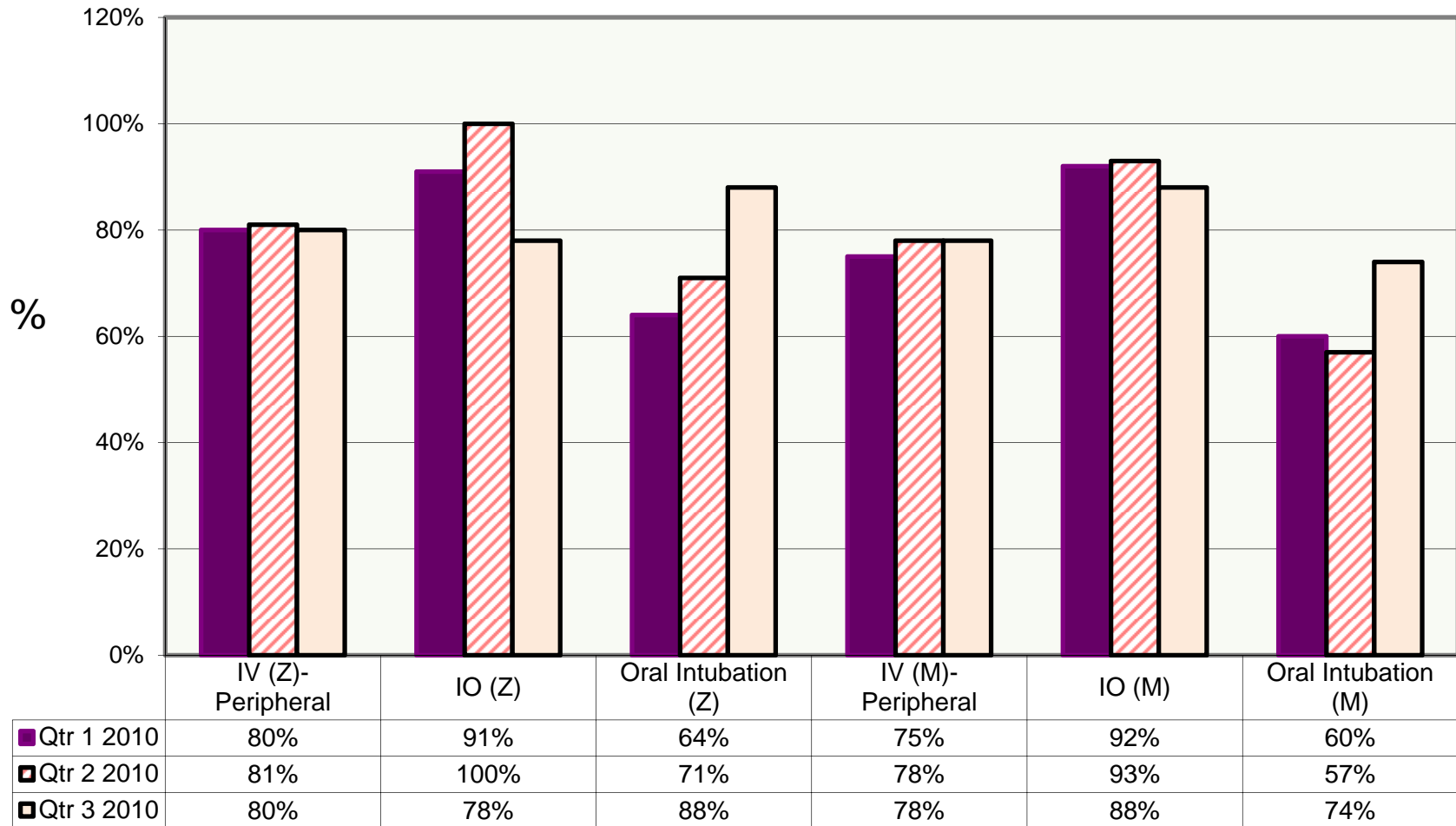


## Documentation of Adult Pain Scale for Top 10 Painful Primary Impressions Performance Run Chart



Note: This indicator will be reinstated as core in 2013

## Contra Costa Emergency Medical Services Critical Skills Success (Zoll + MEDS ePCR data)



Note: This indicator will be reinstated as core in 2013

**END REPORT**  
**Annual 2012**